

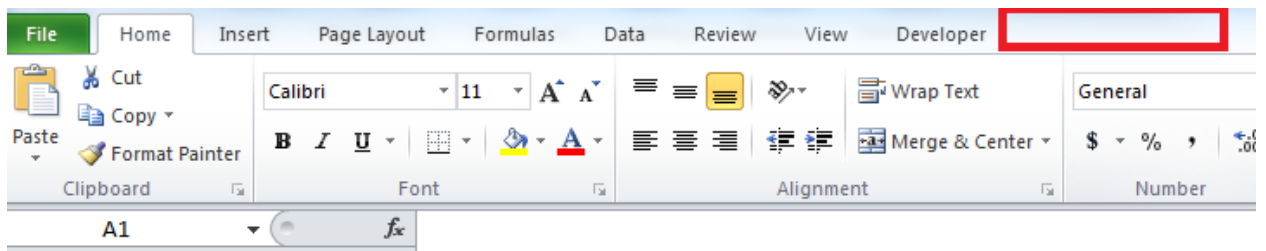
Smart FIR Support Memo

Topic

Enabling and Disabling Smart View

Response

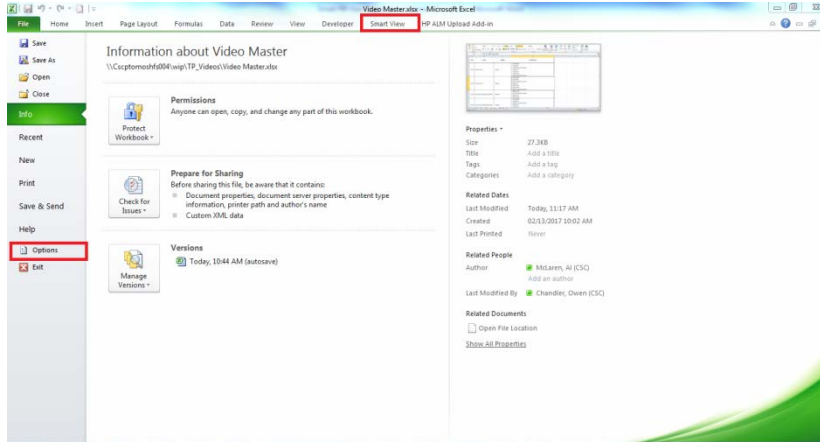
If the Smart View tab is not visible, it is likely due to the add-in being disabled.



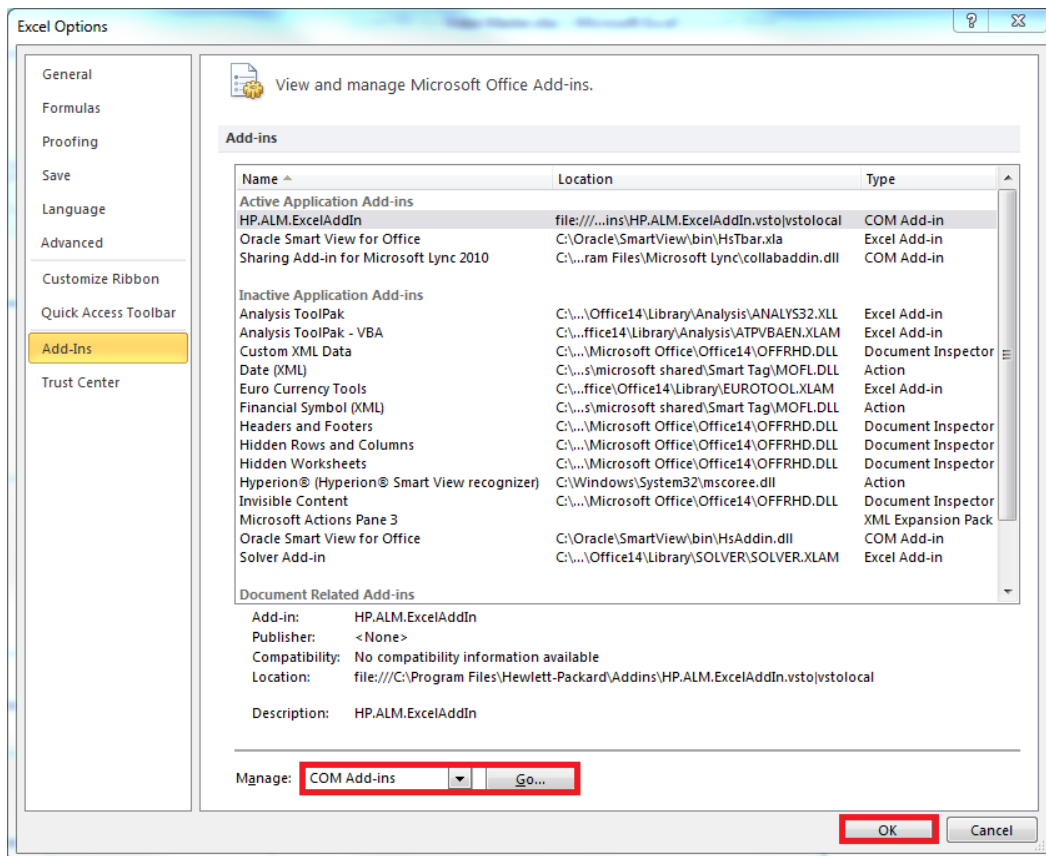
For Further information please contact FIR.MMAH@Ontario.ca

Enabling Smart View

To Enable the Smart View Add-in **Select --> File --> Options**

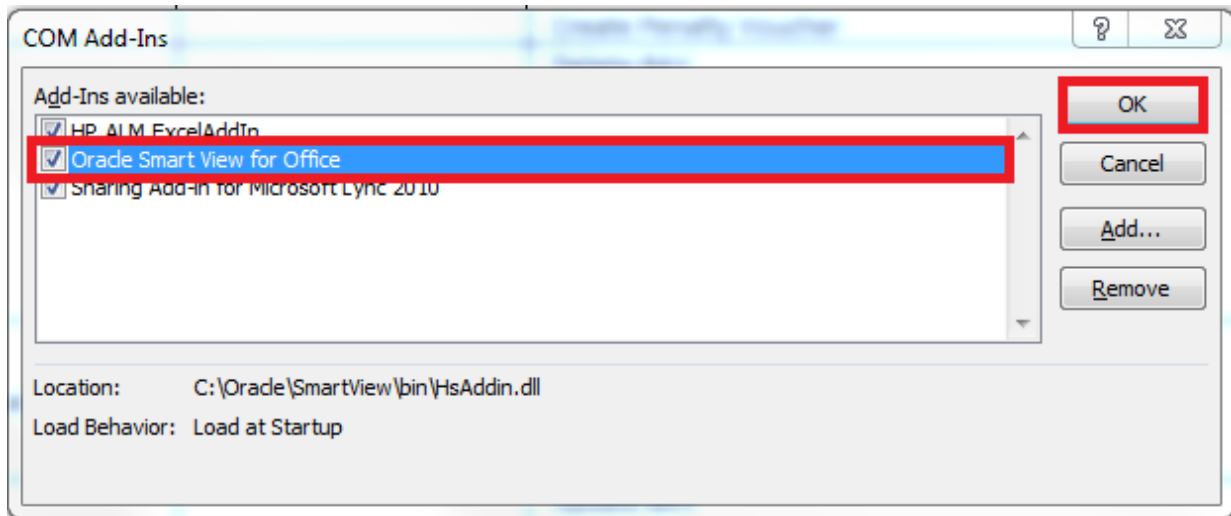


Select **Add-ins** → **Manage: COM Add-ins** (from Dropdown menu) and click **GO**, then **OK**.



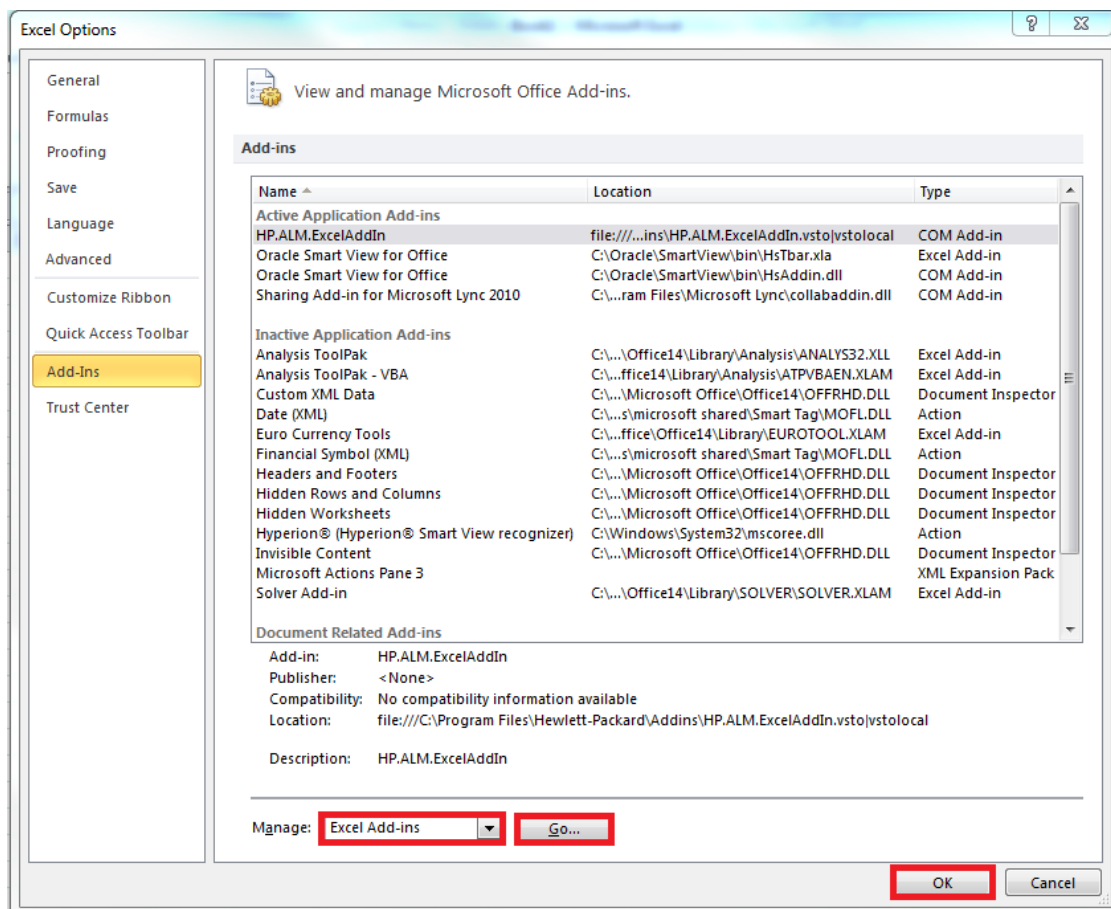
For Further information please contact FIR.MMAH@Ontario.ca

Check the **Oracle Smart View for Office** box and select --> **OK**



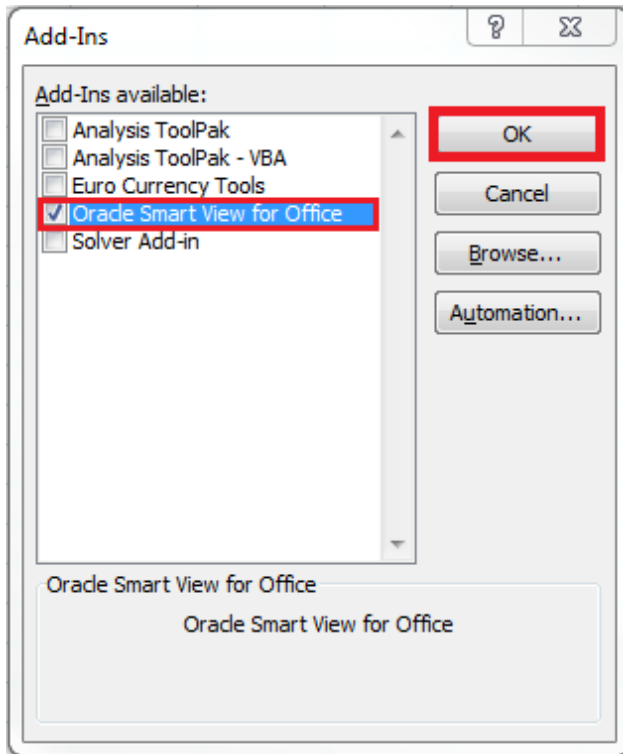
After clicking **OK** you will be returned to the previous page.

Select **Add-ins** → **Manage: Excel Add-ins** (from Dropdown menu) and click **GO**, then **OK**.

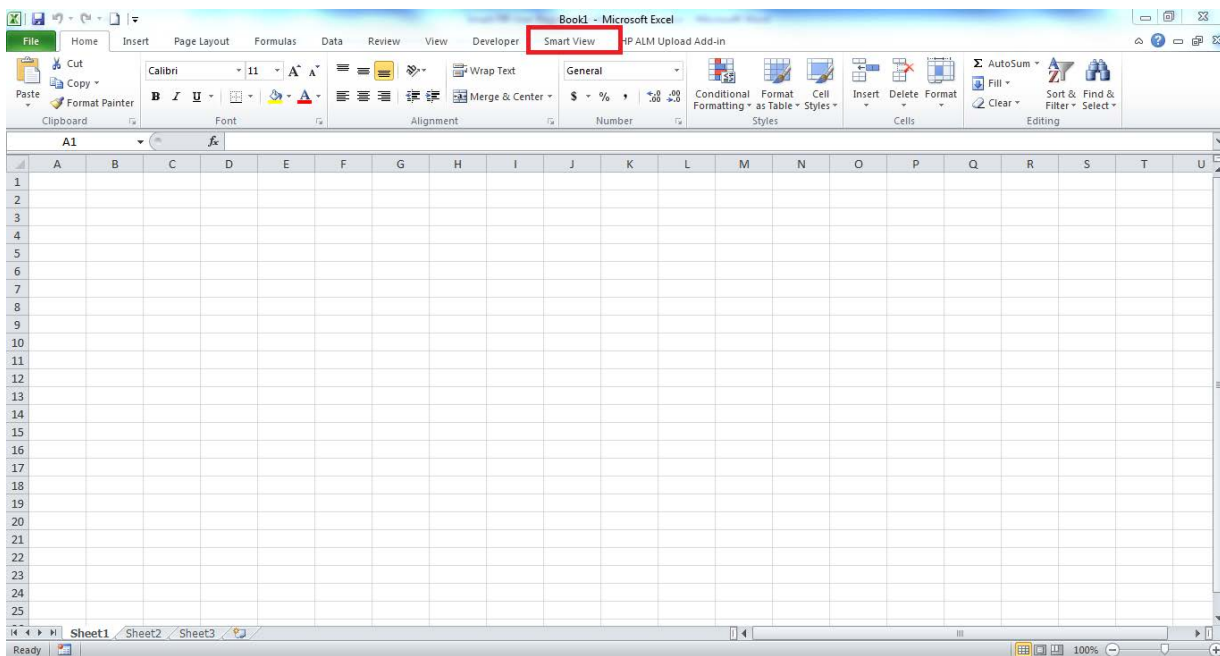


For Further information please contact FIR.MMAH@Ontario.ca

Check the **Oracle Smart View for Office** box and select --> **OK**



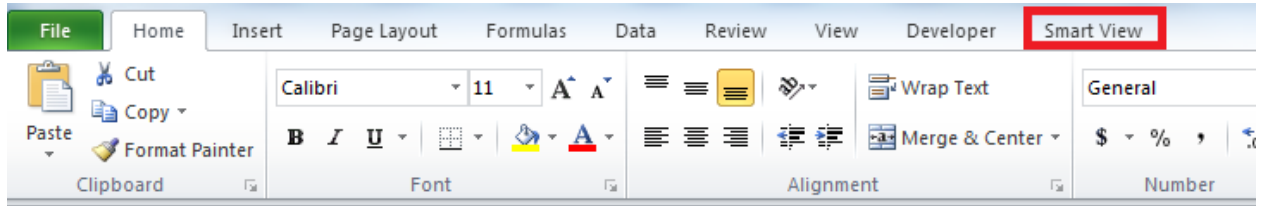
Restart Excel and the Smart View menu item will return indicating the **Smart View Add-in** is enabled.



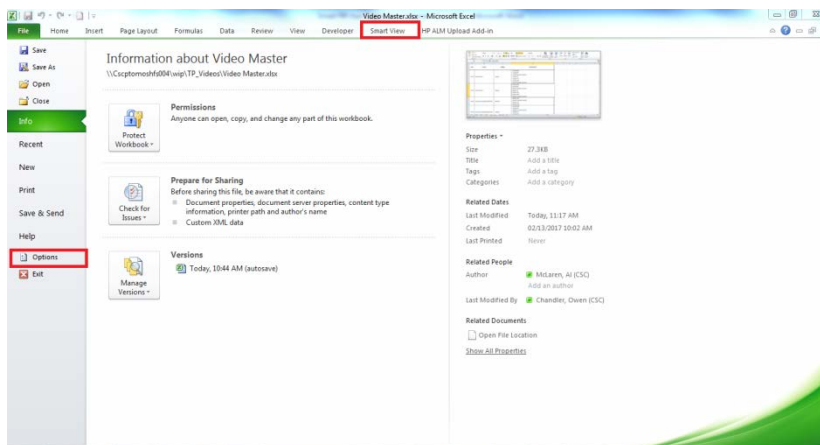
For Further information please contact FIR.MMAH@Ontario.ca

Disabling Smart View

If Smart View is enabled it will appear as follows:

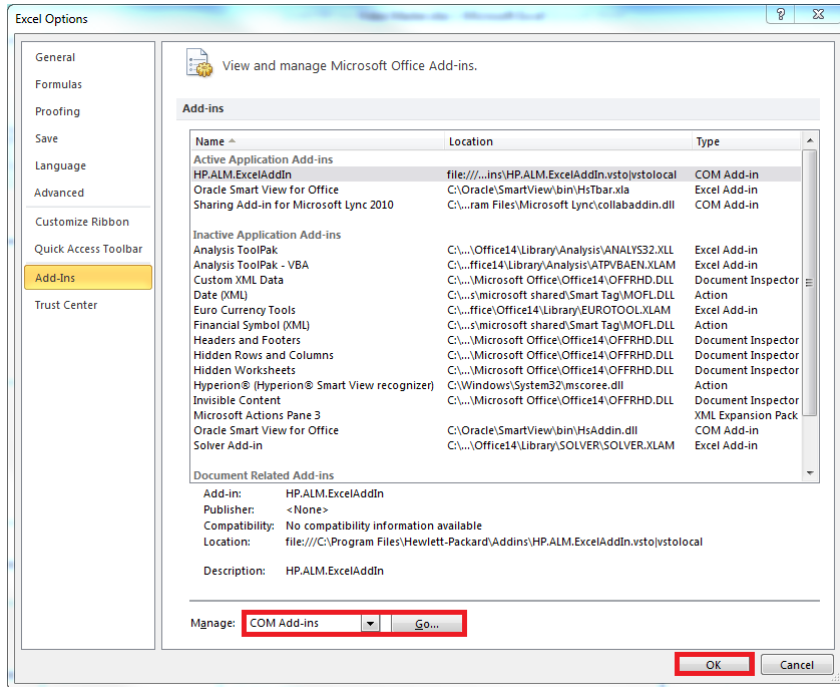


To disable the Smart View Add-in **Select --> File --> Options**

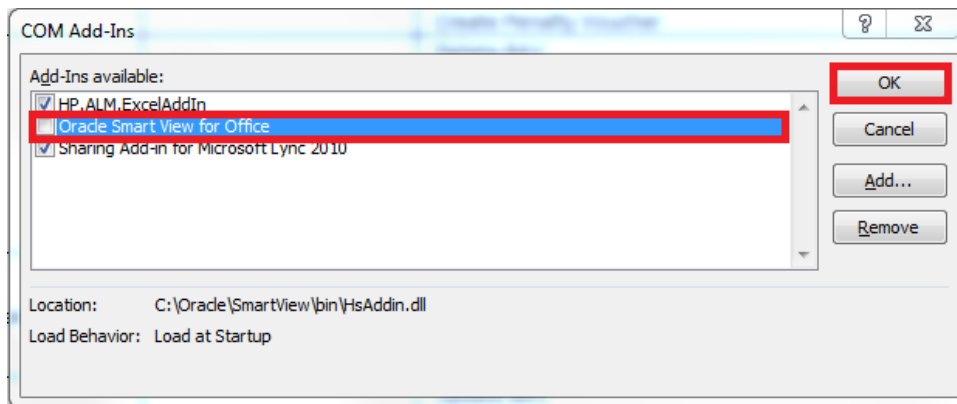


For Further information please contact FIR.MMAH@Ontario.ca

Select **Add-ins** → **Manage: COM Add-ins** (from Dropdown menu) and click **GO**, then **OK**.



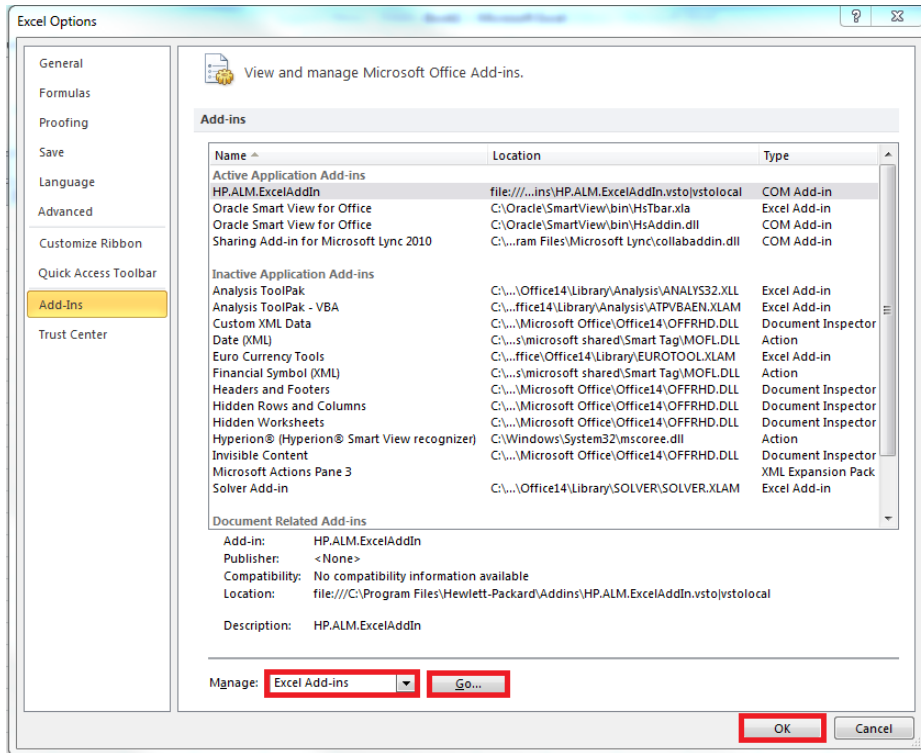
Un-Check the **Oracle Smart View for Office** box and select --> **OK**



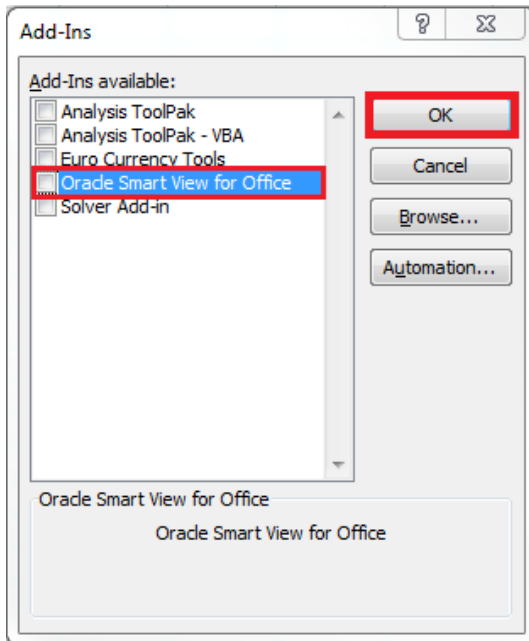
For Further information please contact FIR.MMAH@Ontario.ca

After clicking **OK** you will be returned to the previous page.

Select **Add-ins** → **Manage: Excel Add-ins** (from Dropdown menu) and click **GO**, then **OK**.



Uncheck the **Oracle Smart View for Office** box and select --> **OK**



For Further information please contact FIR.MMAH@Ontario.ca

Restart Excel and the Smart View menu item will return indicating the **Smart View Add-in** is disabled.

